



KONICA MINOLTA

WORKPLACE HUB CORE AND SMART

RETHINK IT ON YOUR TERMS



Giving Shape to Ideas

AN INTELLIGENT CONNECTED WORKPLACE

Always Accessible, Convenient Application Platform as a Service

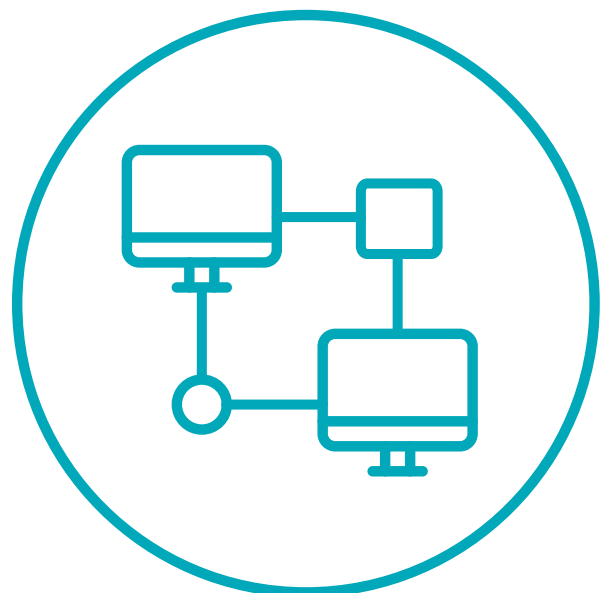
Imagine technology built around you. Seamlessly configured to make work easier, faster, smarter.

Workplace Hub Core and Smart is a true Application-as-a-Service platform that is always connected, always accessible, from anywhere. There's no need to build, maintain, or support the platform internally both now and for the future – we've got that conveniently covered for you with one contract and a fixed monthly price. And for added peace of mind, Konica Minolta will provide a secure, fully managed package that includes 24/7 monitoring and management alongside 8 x 5 service desk support.

Workplace Hub Core provides a comprehensive platform that is flexible and can be tailored to you - including enterprise-class server hardware, operating system and hypervisor-running, industry-leading solutions in Document Management, Print Management, Network Fax and Healthcare-specific offerings to co-exist with your existing network infrastructure.

Workplace Hub Smart offers the same functionality of Core but also combines the power of installing the server in the award winning Konica Minolta iSeries products providing customers print and copy speeds ranging from 25ppm to 65ppm (pages per minute), with Scan speeds ranging from 100/200ipm to 140/280ipm (images per minute).

Explore the IT flexibility and convenience of the Core and Smart.





ONE COMPLETE SYSTEM WITH TAILORED FEATURES



DOCUMENT MANAGEMENT

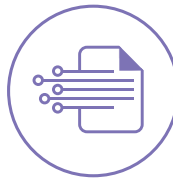
Electronic Document Management System (EDMS)

The EDMS platform provides process automation for the storage and retrieval of documents, content, emails, and data. Replace manual processes with automated data capture, workflows, and content processing & archiving while providing control and security over documents, content and emails.

Features include:

- Document Capture & Data Extraction
- Workflow for Business Process Automation
- eForms & Automated Data Collection
- Network Folder Migration
- Automatic Document Creation in Workflow

The EDMS platform provides process automation for the storage and retrieval of documents, content, emails, and data. Replace manual processes with automated data capture, workflows, and content processing & archiving while providing control and security over documents, content and emails.



PRINT MANAGEMENT & SINGLE SIGN-ON TO WORKFLOW AUTOMATION

DISPATCHER SUITE

As our premier print management and workflow automation solution, Konica Minolta's Dispatcher Suite allows companies to effectively manage and reduce their printing costs while increasing their document workflow productivity and security. The Dispatcher Suite platform comprises Dispatcher Paragon for print management and Dispatcher Phoenix for automated workflows. This feature-rich, integrated platform simplifies print and scan operations, maximizes office efficiencies, and provides businesses of all sizes with the flexibility they need. (Available as a suite or independently)

DISPATCHER PARAGON

SECURE PULL PRINT – PRINT ROAMING

- It is against government regulations to leave documents containing personal information
- Places print jobs in a hold queue until the user authenticates at any supported device

DETAILED OUTPUT AND COST REPORTING

- Web Reports
- Management Reports
- Automated Reporting

CENTRAL USER AND ROLE MANAGEMENT

- Permission Templates
- Secure Authentication
- Rules-Based Printing

DISPATCHER PHOENIX

ADVANCED CAPTURE

- Captures documents and email attachments from bizhub® multifunctional printers (MFPs), local and network folders, LPR print queues, mobile devices and more

AUTOMATED PROCESSING

- Automate time-consuming manual tasks
- Converting paper documents to PDF and Microsoft Office formats, including PDF Searchable, PDF/A, Word and Excel.
- Extracting data from files via OCR zones, eliminating the need for manual data entry.

SINGLE SIGN-ON TO THE CLOUD

- Single sign-on to major Cloud applications such as Dropbox, Box, OneDrive, OneDrive for Business, Google Drive and SharePoint Online.



PRINT MANAGEMENT

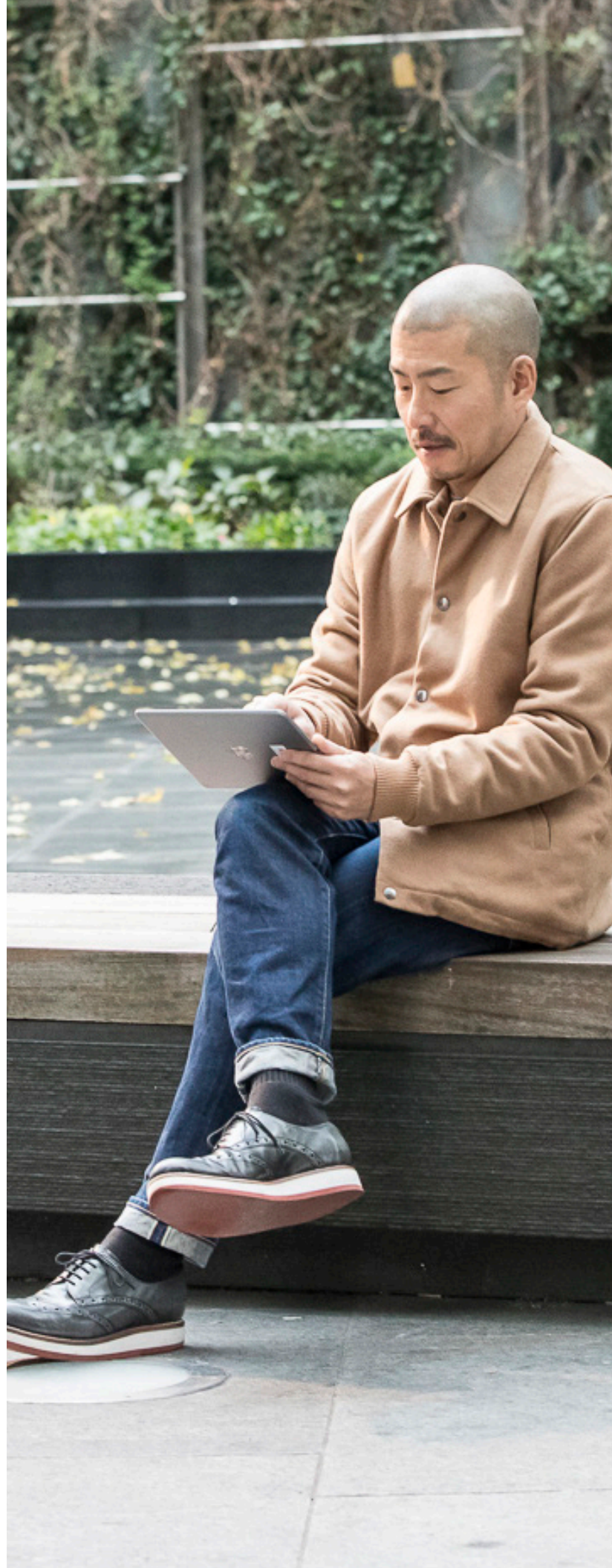
A multi-platform solution that enables businesses and organizations of any size to manage, analyze, account and optimize print, copy, fax and scan output via user login or card ID. Typical uses include student & faculty chargebacks, internal departmental account billing, secure job release with "Follow Me" pull printing, driverless web and mobile printing, auto enforced print job routing based on administrator defined attributes. Reduce print and copy costs simply and easily.

- Simple Web-based Administration
- Login or ID Card - Authenticate users via proximity card at the MFP
- Secure Pull - Printing and conditional job routing
- Over 50 inbuilt one-click reports



NETWORK FAXING

A flexible and configurable fax server with integration and automation capabilities. Regulations and information governance policies require fax when other methods of exchange are not secure and pose a compliance risk. Our network faxing solution integrates fax and document distribution with our bizhub multifunctional printers (MFPs), supporting email, desktop, and enterprise applications, enabling secure fax exchange from a variety of business applications.





HEALTHCARE BUNDLE

Healthcare organizations have unique requirements to secure Protected Health Information (PHI) when using multifunctional devices to print, copy, fax or scan with the ability to integrate with a hospital's back end systems. Our bizhub® multifunctional printers and solution offerings provide a unified interface that delivers healthcare workflows that are authenticated, secure, automated and easy to use. These integrations allow organizations to leverage secure print from EHR, including print release and authentication with Personalize's Follow-You Persona printing functionality in host-based environments such as Epic and Cerner for HIPAA compliance.

- Secure Pull Print from EHR backend systems such as Epic and Cerner
- Tracking by user from EHR backend systems
- Single Sign-On by user name and password, Pin or IC card to scan workflows
- Certified on Epic's App Orchard



FEATURES OVERVIEW

SERVER SPECIFICATIONS AND MANAGED IT SUPPORT

| PROCESSOR NAME | INTEL |
|---------------------------------|---|
| Number of Processors | 1 or 2 |
| Processor Core Available | 8 to 24 Core |
| Memory | 64GB – 256GB |
| Drive supported | 4 x 1TB SATA HDD up to 2 x 960GB SSD with 6 x 2TB SATA HDD |
| Network controller | Embedded 2x1Gb NIC and optional 2x10Gb Base-T mezzanine LOM |
| Power Supply | Dual hot-plug redundant - 800W PSU/400W BBU |
| Operating System | Hardened Windows Server operating system with Hyper-V |
| Managed Security | Host and Virtual Machine (VM) malware defense and patch management |
| Managed Backup | Daily virtual machine local disk backup, 30-day retention, on-demand recovery, and optional cloud backup. |
| Remote Access | 24 x 7 secure remote access to host and virtual machines |
| Remote Monitoring | 24 x 7 hardware, operating system, and application monitoring |
| Service Level | 15 min alert response / 4 hr. alert resolution / 4 hr. part replacement |
| End User Help Desk | 8 x 5 solution application support for administrators and end users |





[LEARN MORE AT RESHAPEWORK.COM](https://www.konica-minolta.com/workplacehub)

© 2020 KONICA MINOLTA BUSINESS SOLUTIONS U.S.A., INC. All rights reserved. Reproduction in whole or in part without written permission is prohibited. KONICA MINOLTA and the KONICA MINOLTA logo are registered trademarks or trademarks of KONICA MINOLTA, INC. All other product and brand names are trademarks or registered trademarks of their respective companies or organizations. All features and functions described here may not be available on some products. Design & specifications are subject to change without notice.



KONICA MINOLTA

KONICA MINOLTA BUSINESS SOLUTIONS U.S.A., INC.
100 Williams Drive, Ramsey, New Jersey 07446

[CountOnKonicaMinolta.com](https://www.CountOnKonicaMinolta.com)



10/20-P